

## CONSTRUCTION SCHEDULE

Anticipated to begin in summer 2017 and conclude in late 2018 with observance of the downtown holiday moratorium.

**9<sup>th</sup>**

**STREET CORRIDOR**

**Jun. 2017 – Apr. 2018**

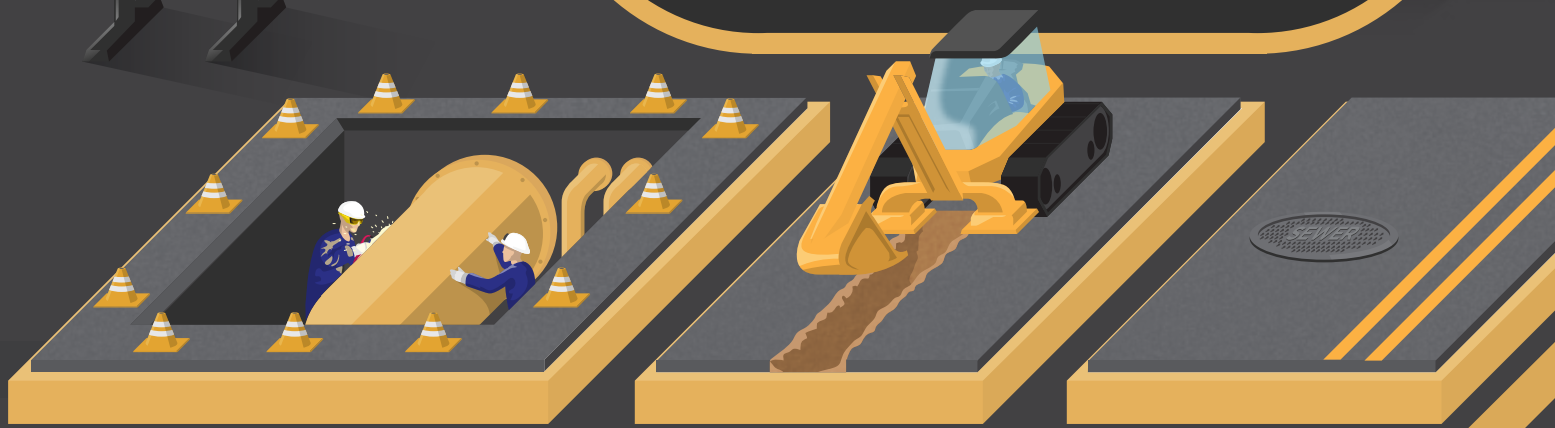
**3<sup>rd</sup>**

**STREET CORRIDOR**

**Nov. 2017 – Dec. 2018**

## DURING CONSTRUCTION

Upgrades will include installation of large diameter combined sewer pipes ranging from 42 to 60-inches. The below construction methods will be used to help minimize impacts to daily pedestrian, bicycle and vehicular traffic.



### TUNNELING CONSTRUCTION

Bore and jack methods with pits exposed to surface for equipment access/retrieval

### OPEN CUT CONSTRUCTION

Conventional open cut trench methods

### FINAL CONSTRUCTION

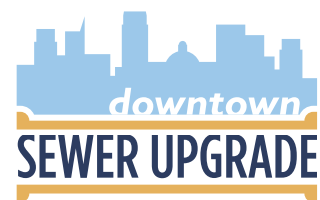
Street paving and manhole installation

## ANTICIPATED WORK HOURS

**Monday - Friday\*** Typically during non-commute hours

\*Some night/weekend work may be required

Business/resident access will remain open at all times and traffic alerts will be sent before any closures. Flaggers will be stationed at designated areas to maintain safe travel. A construction liaison will work closely with property owners and occupants throughout construction to inform them of upcoming activities and address concerns regarding potential impacts.



[downtownsewerupgrade.com](http://downtownsewerupgrade.com)

Information Hotline: (916) 384-0251  
info@downtownsewerupgrade.com

Stay Connected!



LANE CLOSURES



TRAFFIC DELAYS



DETOURS




NOISE, DUST & VIBRATIONS



CLOSED CROSSWALKS



Español | 中文 | Tagalog | Tiếng Việt | Hmoob | Русский



downtown

# SEWER UPGRADE

## CONSTRUCTION ALERT!

The City of Sacramento Department of Utilities is implementing a Sewer Upgrade along **3rd Street between I and U streets** and **9th Street between G and L streets**.

### Upgrade Benefits:

Relief of existing pipes and capacity for planned development on City's aging Combined Sewer System (CSS), providing sewer and storm drain needs for 7,500 acres within the City (Downtown, East Sacramento, River Park, Land Park, Curtis Park, and Oak Park neighborhoods).



**INCREASE CAPACITY TO  
REDUCE CSS OUTFLOWS**



**REPLACE OLD PIPES TO HELP  
CSS OPERATE MORE  
EFFICIENTLY**



**ADD STORAGE TO REDUCE  
LOCALIZED FLOODING**